



BCP™

MAKING CONSERVATION OF WILDLIFE HABITAT VALUABLE TO PEOPLE

IMPACT

REPORT

2020

A Celebration of what you have helped us achieve in 2020

9 YEARS OF BCP

2012 →

BCP incorporated and LZRP started



2013 →

LZRP becomes Africa's first triple gold CCB-validated project; the world's 3rd

BCP, an 18-month-old African startup wins the USAID/CFP for \$14 Million for 5 years

2014 →

BCP passes its first VCS verification through LZRP

2015 →

The Forests Act of 2015 enables CFMGs to control forest rights and have the ability to transfer carbon rights to third parties

2017 →

BCP is the third highest scoring Certified B Corporation in the World



2018 →

BCP signs 30-year agreements with 12 Chiefdoms under LCFP covering 944,000 ha

2019 →

LCFP CFMGs become the first in Zambia to be granted carbon rights from Government

→

LCFP achieves VCS verification and CCB Triple Gold validation. LCFP becomes the largest REDD+ Project in Africa by hectares and the largest in the world by quantified social impact!

→

ENI, PPF, and BCP sign MoU to develop 10 million ha of REDD+ projects in Africa. ENI and BCP sign 20-year agreement to buy offsets from LCFP

2020 →

LZRP the world's 1st REDD+ Project to pass 7 successful VCS verifications

→

BCP Runner Up in the 2020 Environmental Finance Rankings as world's "Best Project Developer – forestry and land use"

→

50,000,000 Kwacha paid to LCFP CFMGs in Forest Carbon Fees (\$2.3 million)



EXECUTIVE SUMMARY



Dear BCP Supporters, Partners, and Stakeholders,

In the last decade since BCP's incorporation in 2012, BCP has become Africa's largest developer of forest carbon projects by hectares and social impact, and arguably Africa's leading REDD+ project developer. BCP implements two REDD+ projects: the Lower Zambezi REDD+ Project (LZRP) and the Luangwa Community Forests Project (LCFP) and is a pioneer in using commercial strategies to tackle big social and environmental problems in Zambia, with the aim to scale regionally in Africa.

Our achievements and strengths include innovation in the forest carbon space, creating impact at scale (over 1 million hectares of forests under improved management), maintaining high standards of operation, and delivering quality carbon offsets, and currently, we are linking communities in Zambia's rural and highly biodiverse landscapes to global carbon markets.

I am excited to use this space to announce BCP's ambitious new Strategic Plan for 2021 to 2024, which will support us to achieve our mission and even greater results as we work with our partners to attain our 2023 Strategic Objective and our 2030 Moonshot of helping to conserve 30 million acres (12 million ha) and benefitting 3 million people in Africa through our REDD+ work.

To realize our goals, we need to go beyond business as usual, invest in innovation and build broader, bolder partnerships. As a for-profit social enterprise, BCP's purpose is to protect natural forests by developing REDD+ projects aimed at empowering communities, developing livelihood initiatives as alternative sources, foster sustainability, and strengthen institutional governance and capacity. We do this through quality verification at the highest standards and strategic sales of carbon credits to voluntary carbon buyers.

Sincerely,

Hassan
Sachedina
BCP CEO.



Hassan - destined to be a Conservationist from a young age



AN INTRODUCTION TO BCP

Deforestation is a global problem that accounts for about 15% of the world's emissions. Zambia's deforestation is among the highest in the world. Zambia loses forest four times the size of New York City to deforestation every year. That's an average of 300,000 hectares of valuable wildlife habitat disappearing annually, mainly driven by charcoal production and unsustainable farming techniques.



AN INTRODUCTION TO BCP

The background of the entire page is a photograph of a rocky coastline. In the foreground, several seabirds, likely terns, are perched on the edge of a cliff. They have bright orange-brown bodies and blue-tipped wings. Some are looking towards the camera, while others are in flight. The cliff face is rugged and light-colored. In the background, the ocean is visible under a clear sky, with more birds flying in the distance.

BCP is a social enterprise, we are a mission-driven, for-profit company, whose mission is to make the conservation of wildlife habitat valuable to people.

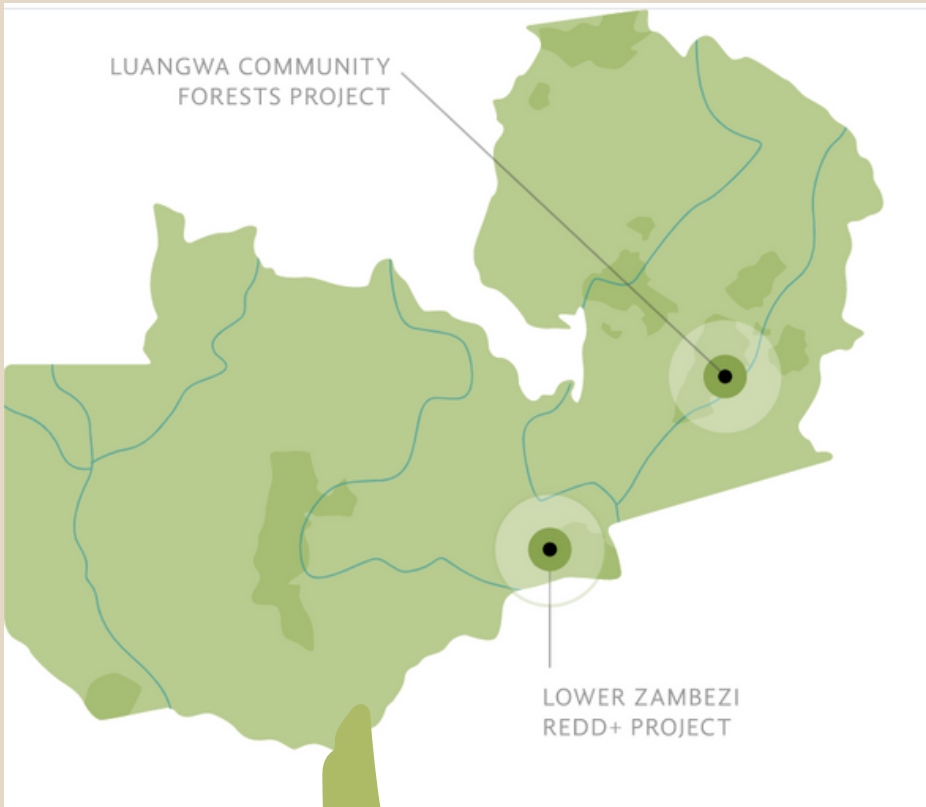
Our goal is by 2030 that through our partnership with government and communities, to have helped conserve up to 10 million hectares and to have benefited over 1 million people in Africa. We believe that this new form of conservation finance is pioneering the way as a mechanism to reduce carbon emissions by protecting forests. On a global level, if we want to address climate change then action needs to be taken now, or we, as a global community will have missed the opportunity to preserve forests for future generations to come.

At BCP we understand that in order to address deforestation, we have to look deeper and tackle the root causes linked to the economic and social reasons behind deforestation. As a result, BCP is benefiting 224,622 beneficiaries and enhancing the lives of 37,437 households through conservation fees and community impacts across both of our projects.

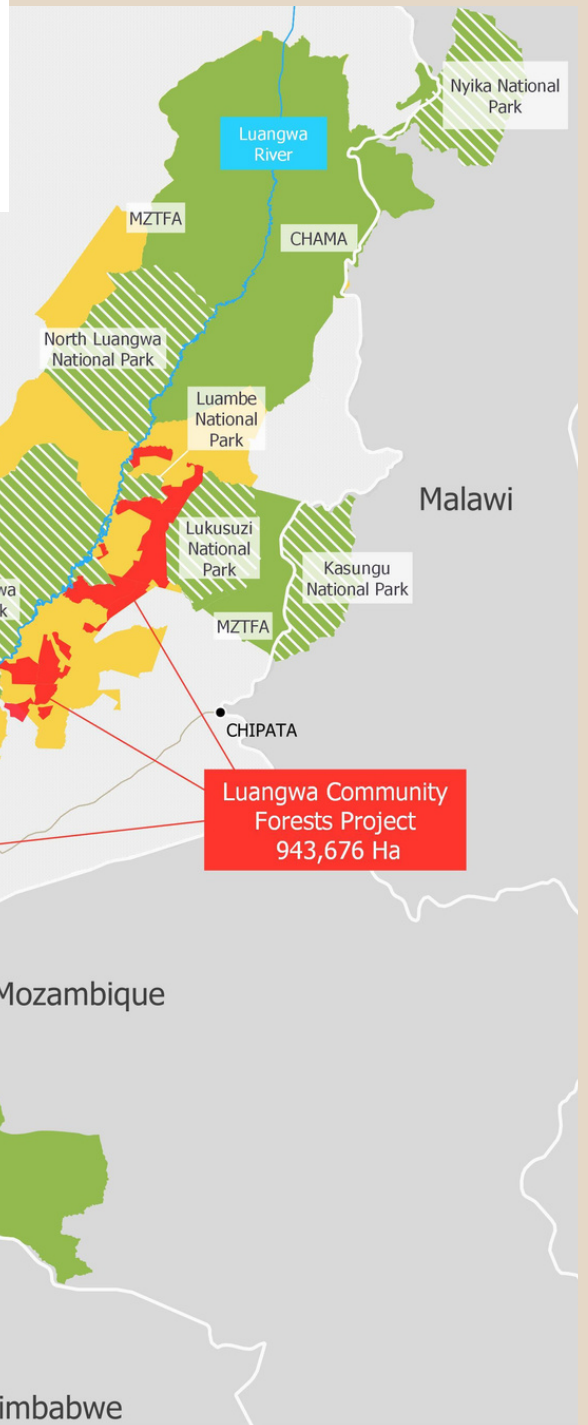
Our Mission



BCP's mission is to make conservation of wildlife habitat valuable to people. We develop forest carbon offset projects in areas of global biodiversity significance, to conserve Africa's wildlife strongholds and deliver powerful community impacts. We're helping to create one of Africa's largest migration corridors, by protecting the habitat linking 5 National Parks in Zambia to conserve biodiversity connectivity for Zambia, Malawi, Zimbabwe, and Mozambique.



Zambia



Luangwa Community Forests Project
943,676 Ha

Lower Zambezi REDD+ Project
40,126 Ha

Mozambique

Zimbabwe



OUR STORY SO FAR

BCP's proven model keeps Zambian forests standing and brings benefits to communities and wildlife

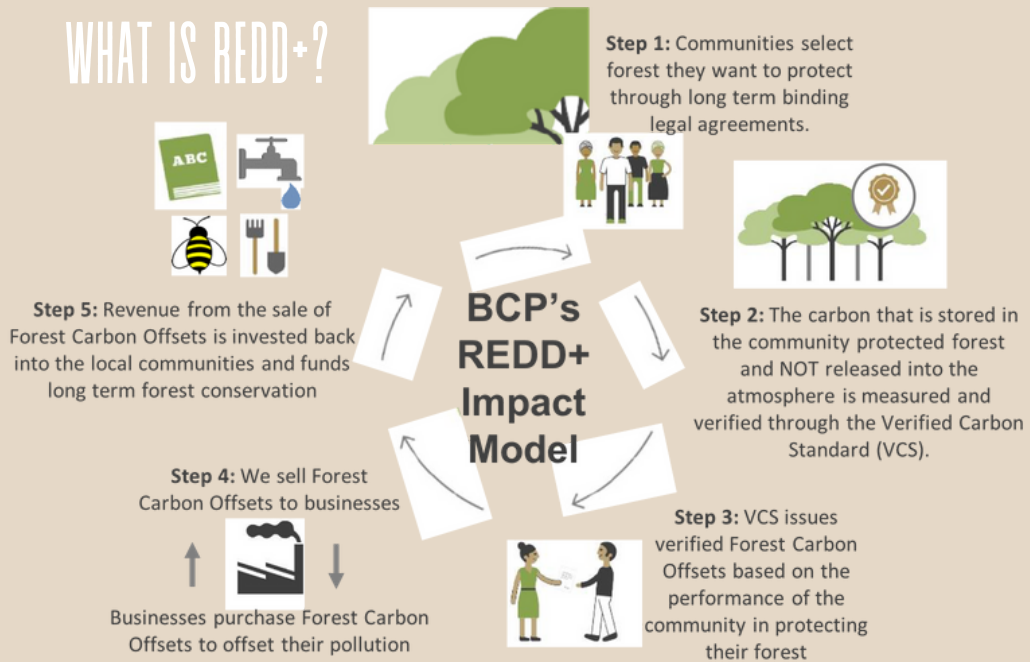
BCP is a leading African forest carbon offset development company. We work hand in hand with local communities to develop long-term conservation projects that raise environmental awareness and improve the quality of life for local communities.

Forests protected through the UN REDD+ model generate verified carbon offsets. These offsets are audited and then sold to fund wildlife conservation activities, create new jobs and improve social services in local communities, such as education, healthcare and access to clean water.

THE BCP MODEL

AT BCP WE TAKE A HOLISTIC APPROACH TO UNDERSTAND THE LINK BETWEEN POVERTY, ENVIRONMENTAL DEGRADATION AND CLIMATE CHANGE

WHAT IS REDD+?



“ While humans have historically divided land with country borders and National Parks, this isolates wildlife populations, putting them at greater risk of extinction ”



“ African species still migrate through large landscapes in Sub-Saharan Africa including endangered species such as elephants, lions and wild dogs ”



“ The Luangwa-Lower Zambezi eco-system is one of the worlds last 10 remaining wildlife strongholds ”

“ Our REDD+ project areas protect numerous wildlife species at risk of extinction ”

ENDANGERED



AFRICAN WILD DOG
Lycaon pictus



TEMMINCK'S PANGOLIN
Smutsia temminckii



AFRICAN LEOPARD
Panthera pardus pardus

VULNERABLE



AFRICAN LION
Panthera Leo

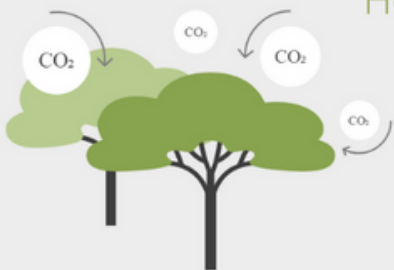


AFRICAN ELEPHANT
Loxodonta africana

“ We tackle the root cause of deforestation and wildlife crime at the community-level to create long-term, sustainable change ”



How we make a difference



Step 1

Trees store carbon. When a tree is cut down that carbon is released as carbon dioxide emissions into the atmosphere, contributing to climate change.

Step 2

We work hand in hand with communities to help them protect their forests using the **BCP model**.



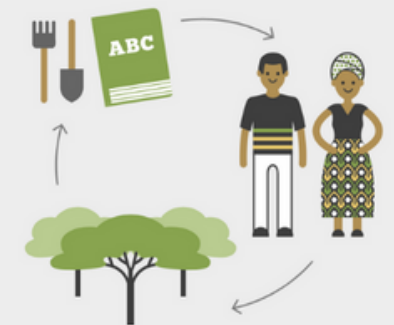
Step 3

Forest carbon and potential carbon dioxide emissions from deforestation are measured through rigorous scientific processes and verified to the highest standards by independent international auditors.



Step 4

We market and sell verified emissions reductions as 'Forest Carbon Offsets' to companies and individuals looking to reduce their carbon footprint.



Step 5

Revenue from the sale of offsets is invested back into communities, creating a more prosperous future through sustainable livelihoods and enterprises, and improved access to social services such as education, healthcare and clean water.

Step 6

Communities have an incentive to protect their forests and wildlife.



THE LOWER ZAMBEZI REDD+ PROJECT (LZRP)



"THE FIRST REDD+ PROJECT IN THE WORLD TO ACHIEVE 7 SUCCESSFUL AND CONSECUTIVE VERIFICATIONS UNDER BOTH VCS AND CCB"

As the first REDD+ Project in Zambia, the LZRP pioneered the development of forest conservation projects in the country

7

**CONSECUTIVE AND SUCCESSFUL
VERIFICATIONS UNDER BOTH
VCS AND CCB STANDARDS**

CCB TRIPLE GOLD VERIFIED

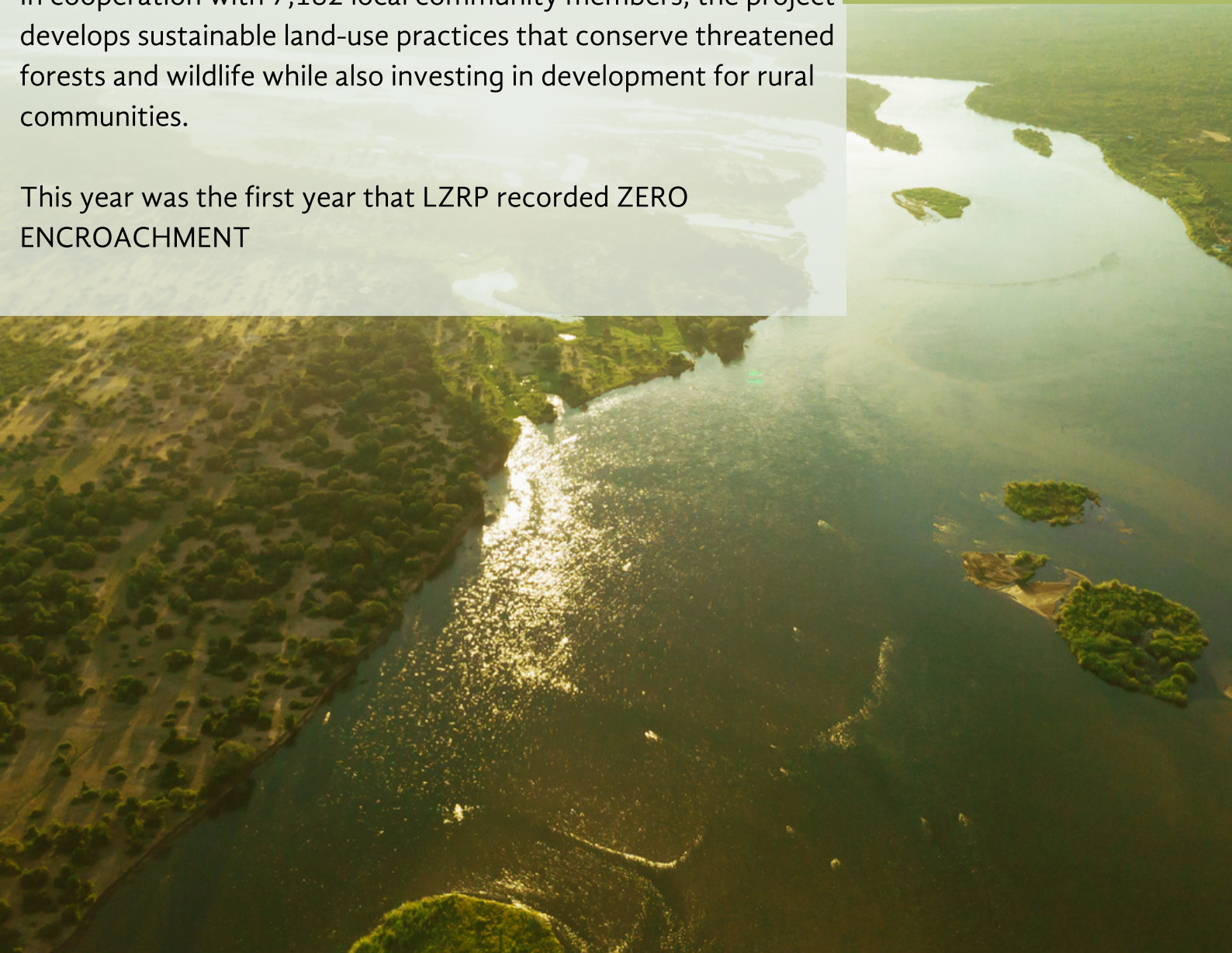
**FOR EXCEPTIONAL
COMMUNITY IMPACTS**

The LZRP REDD+ Project, known as Rufunsa Conservancy, covers 40,126 hectares of threatened Miombo forest in Lusaka Province. The area strategically protects 61km of the Lower Zambezi National Park boundary, providing an important buffer zone between Park wildlife and local communities.

Lion, sable, and roan antelope are among many special species found in the LZRP Project area. The eco-system is also one of Africa's ten last lion strongholds, and home to one of the region's largest elephant populations.

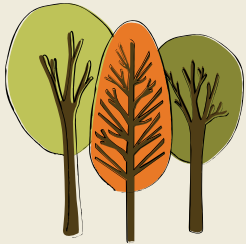
In cooperation with 7,182 local community members, the project develops sustainable land-use practices that conserve threatened forests and wildlife while also investing in development for rural communities.

This year was the first year that LZRP recorded ZERO ENCROACHMENT



LZRP IMPACTS

Protects 40,126 Hectares



20,624,764 Estimated
trees protected



1197 Households benefit
directly from
conservation fees



7,182 Community
Beneficiaries



An average of 200,000
tons of carbon dioxide
emissions reduced
annually



20 Community Impact
projects implemented
since inception



3830 beehives hung
for sustainable honey
production



Currently, 19 Lead Farmers
(3 of whom are female)
trained in Conservation
Farming techniques and
275 Follow Farmers



23 BCP supported
Community Scouts



1,578,878 tons of
offsets issued and
sold to date



31 "Charpreneurs" trained
in sustainable charcoal
production



LZRP's major
customers are oil and
gas, luxury goods,
and financial services



In 2020 Eco-Charcoal
produced 89.8 tonnes of
sustainably produced
charcoal

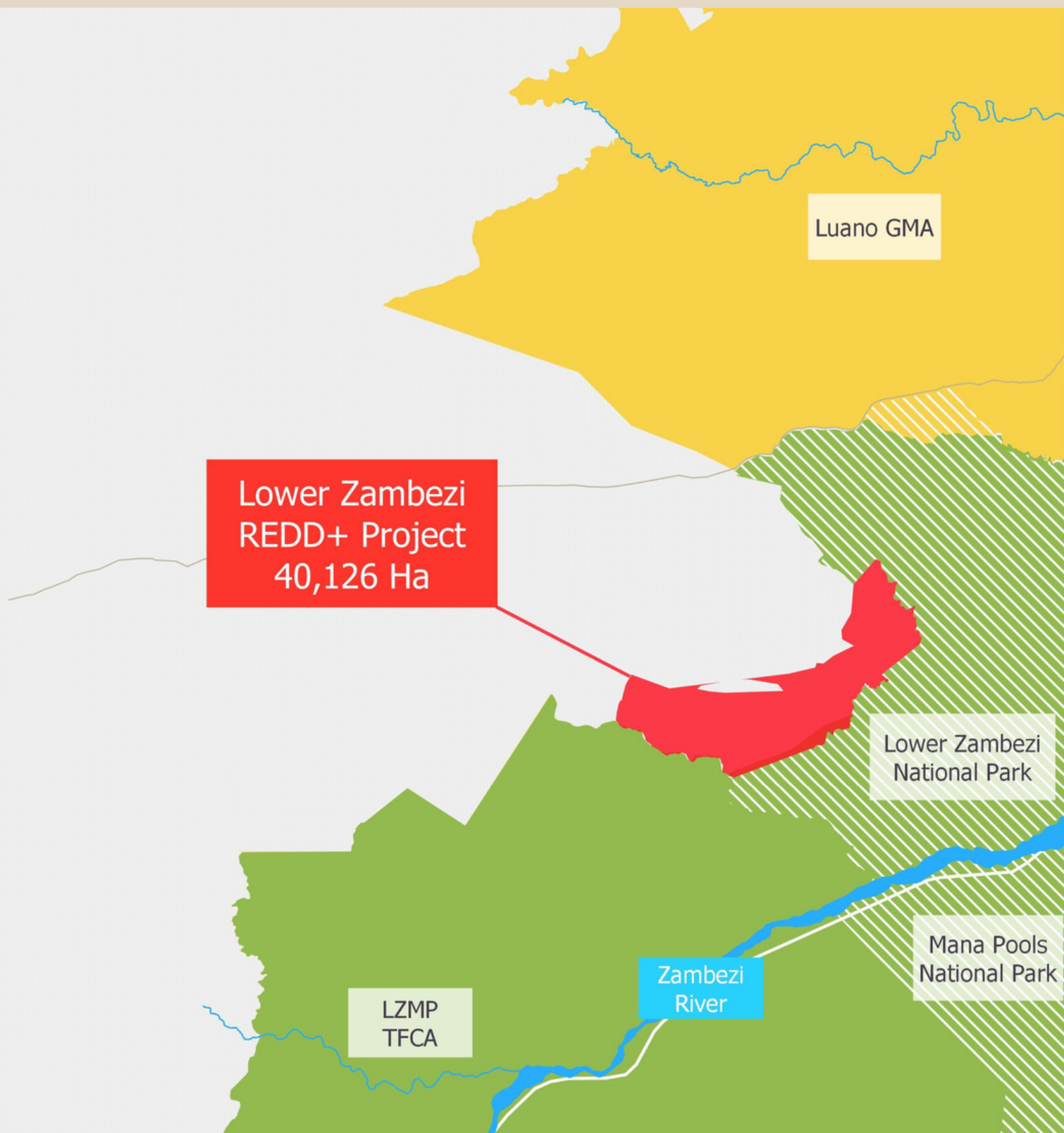


The LZRP is strategically placed to create a critical buffer between the Lower Zambezi National Park and local community members. The Project partners with 4 cooperatives in Bunda Bunda Chiefdom to create an extraordinary impact



**LOWER ZAMBEZI
REDD+ PROJECT**





THE LUANGWA COMMUNITY FORESTS PROJECT (LCFP)

"THE LARGEST REDD+ PROJECT IN AFRICA"



CCB TRIPLE GOLD VALIDATED

FOR EXCEPTIONAL
COMMUNITY IMPACTS

2

CONSECUTIVE AND
SUCCESSFUL VERIFICATIONS
UNDER VCS STANDARDS


Protecting close to 1 million hectares of forest, the LCFP is the largest REDD+ Project in Africa, arguably, the largest in the World in terms of quantified social impact. The project benefits over 217,440 people

The Luangwa Valley is one of the greatest wildlife strongholds remaining on Earth; home to African wild dogs, elephants, leopards and lions.

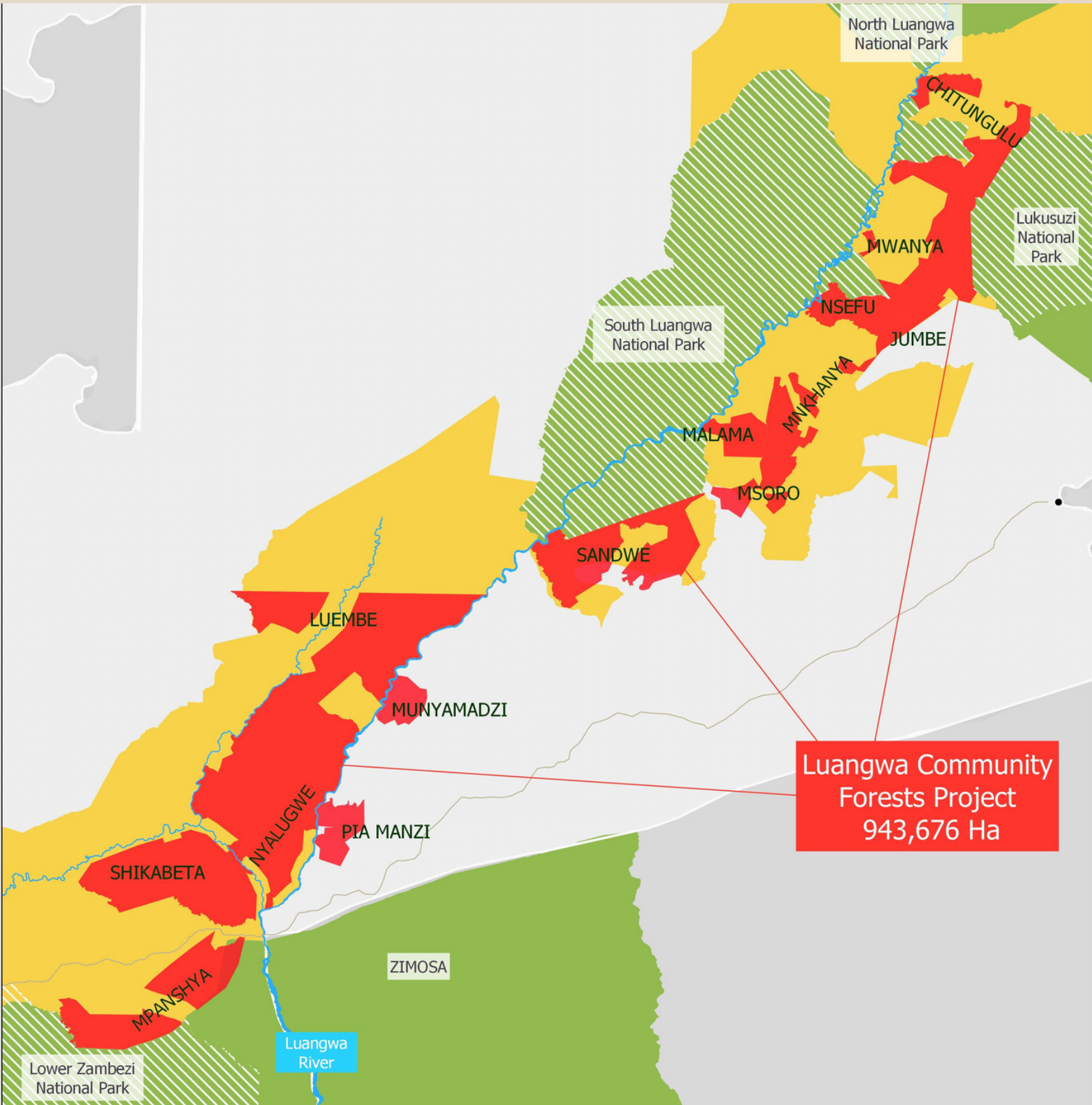
The Luangwa river is a pivotal lifeline for some of the richest forest areas in Africa. The valley topography presents breathtaking beauty in the landscape while also keeping wildlife population density in the area high, resulting in a strong tourism industry that contributes significantly to Zambia's economy.

The LCFP works to address key drivers of deforestation while also benefitting local communities by reducing poverty, creating sustainable incomes, improving social services and encouraging conservation.

Over 217,000 local people in one of Zambia's most impoverished provinces are already benefitting from LCFP through income generation and social services development.

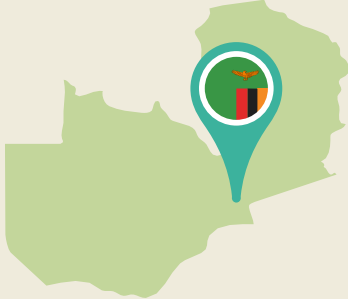


The LCFP acts as an important protective buffer to the South Luangwa, Luambe, Lower Zambezi and Lukusuzi National Parks, providing safe habitat and protected migration paths for wildlife. The project creates a contiguous wildlife corridor.



LCCFP IMPACTS

217,440 Community
beneficiaries across 12
Chiefdoms



32,240 Households
enhanced directly
through forest carbon
fees



514,303,420 Trees
protected



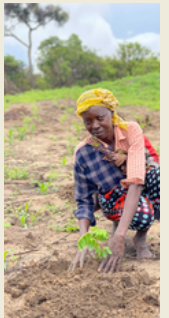
Creation of 45
community impact
projects to date



2,751 Beehives hung for
sustainable honey
production



232 Lead
Farmers (70 of
whom are
female) trained
in Conservation
Farming
techniques and
5,800 Follow
Farmers



32 BCP
supported
community
scouts



4,860,120 Tons of
offsets issued to date



An average annual
reduction of 2.7
million tons of carbon
dioxide emissions



Major customers are oil,
gas, automotive and
financial sectors

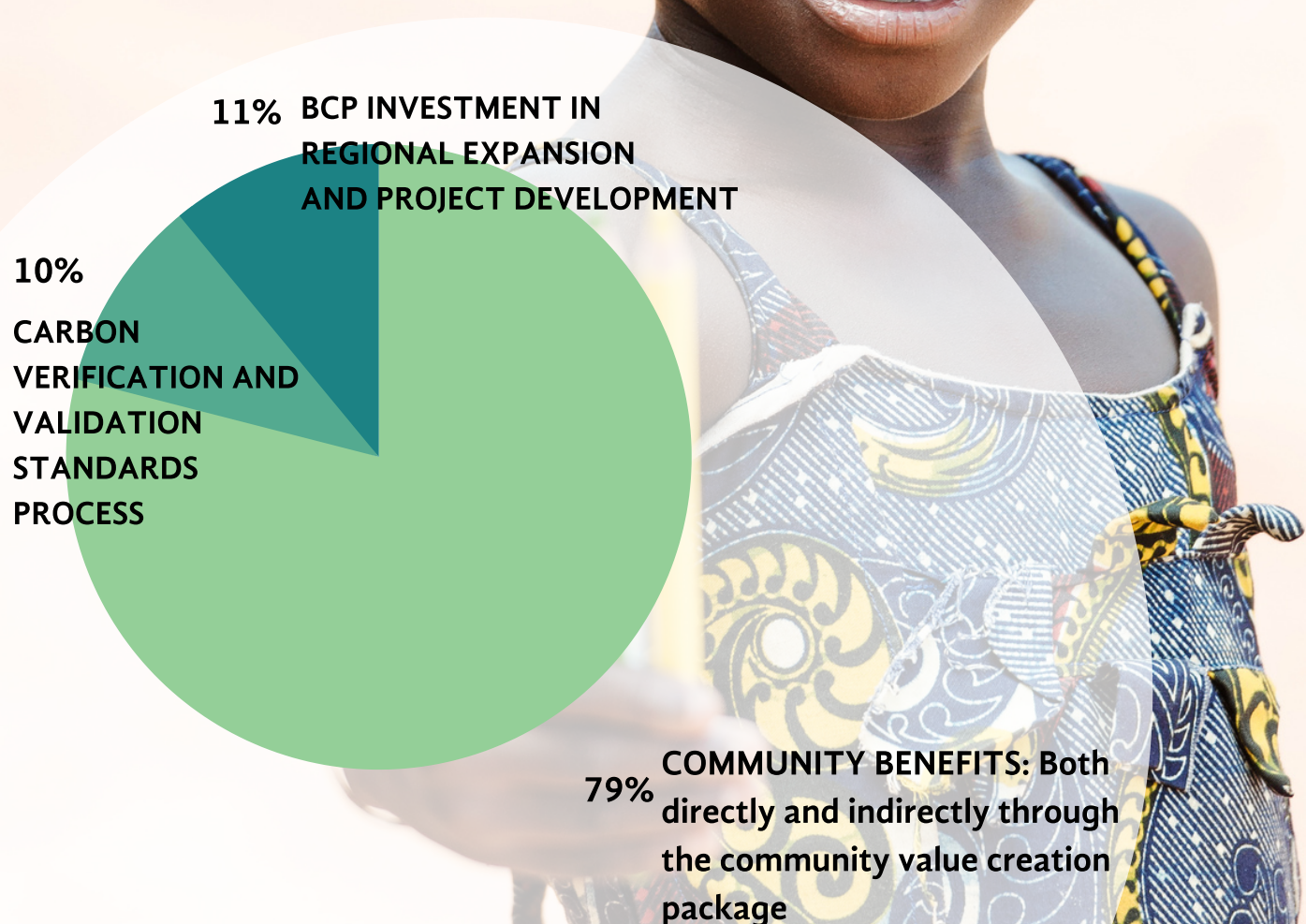


Protects 943,676
Hectares



3,900,000 Tons of
offsets sold to date





COMMUNITY IMPACTS

LIVELIHOOD PROJECTS 2016-2020



**A TOTAL OF 37,437
HOUSEHOLDS BENEFIT
DIRECTLY FROM
CONSERVATION FEES**

**8 TEACHERS'
SALARIES PAID**

**EMPOWERING 6408 FEMALE
HEADED HOUSEHOLDS**



**9 HAMMERMILLS AND 4
HAMMERMILL SHELTERS**

**2 SUNFLOWER OIL
EXPELLERS**

**105 WASH PROJECTS = 56
BOREHOLES, WELLS,
LATRINES, AND HAND
PUMPS**



**39 EDUCATION RELATED
PROJECTS = CLASSROOM
REHABILITATION, SOLAR
INSTALLATION AND WATER
RETICULATION**

**SHIMUNGUWO COMMUNITY
NOW HAVE 2 BOATS =
ACCESS TO CLINICS**

37,437

HOUSEHOLDS ARE BENEFITING
FROM CONSERVATION FEES AND
COMMUNITY IMPACT PROJECTS


224,622

PEOPLE BENEFIT FROM BCP

Zambia sets global benchmark for community forest conservation

Rural communities in Zambia depend on forests for their livelihoods, yet poverty drives deforestation. BCP partners with these rural communities to find ways to reduce poverty. Together, we develop and invest in projects driven by community needs, bringing a positive impact to both rural villages and forests.

In 2020, Twelve communities in the Luangwa Valley have benefited from direct cash payments of K50 million (\$2.3 million) thanks to a partnership with forest conservation business BCP. BCP, in partnership with communities, the Zambian Forestry Department, and the Department of National Parks and Wildlife have resulted in direct monetization of forest resources by local people.



THIS HAS BEEN A TOUGH YEAR DUE TO THE PANDEMIC; TOURISM AND CONSERVATION FUNDING HAVE DECLINED, BUT THROUGH THE EXTRAORDINARY EFFORTS OF OUR PARTNERS SUCH AS THE FORESTRY DEPARTMENT, THE LCFP HAS CHANNLED K50 MILLION INTO COMMUNITIES IN 2020. THIS IS JUST THE BEGINNING OF A LONG-TERM, SELF-SUSTAINABLE CONSERVATION MODEL THAT BENEFITS COMMUNITIES AND WILDLIFE
DR HASSAN SACHEDINA, BCP CEO

COMMUNITY IMPACTS 2020



The public-private-community projects set a new standard in forest conservation that puts the nation at the forefront of global efforts to combat climate change, while protecting forest resources and creating livelihood opportunities for local people. His Royal Highness, Chief Bunda Bunda said: “My community has worked hard towards this REDD+ verification success for Zambia. We thank the government for helping our Chieftdom to access REDD+ benefits and to BCP for the partnership, which has increased employment, livelihoods and development projects.”

\$2,300,000
DIRECT CASH PAYMENT

CONSERVATION IMPACTS 2020



PROTECTING ZAMBIA'S GLOBALLY IMPORTANT FORESTS & WILDLIFE



IN 2020 BCP WAS ONE OF THE FIRST COMPANIES TO OFFSET MORE CARBON THAN IT EMITTED SINCE ITS FORMATION = 100% CLIMATE POSITIVE

OVERALL, WE PROTECT AN ESTIMATED 533,928,184 TREES FROM DEFORESTATION ACROSS BOTH PROJECTS

IN TOTAL, BCP'S REDUCED 7,085,889 TONNES OF CARBON FROM BEING RELEASED INTO THE ENVIRONMENT



94% OF OUR STAFF ARE ZAMBIAN NATIONALS

That is an annual average reduction of deforestation related emissions of 1.4 million tonnes of carbon dioxide across both projects per year, which is the equivalent of removing 290,000 cars from the roads each year!



86 OF OUR COMMUNITY CHIEFDOM HIRES ARE LOCAL = 55% JOB CREATION AT A LOCAL COMMUNITY LEVEL

20% OF OUR STAFF ARE WOMEN



WE SHALL CONTINUE TO KEEP OUR FOREST INTACT BECAUSE IT HAS BROUGHT A LOT OF BENEFITS, ONE OF THEM BEING BEEHIVES WHICH HAVE GIVEN US MONEY TO SEND OUR CHILDREN TO SCHOOL. IT ALSO BRINGS A GOOD ENVIRONMENT TO OUR VILLAGES AS IT HAS GOT A PART TO PLAY IN BRINGING RAINFALL AND GOOD WEATHER ALL AROUND
MRS. CHARITY CHULU, A BEE-KEEPING FARMER IN CHITUNDA VILLAGE, NSEFU CHIEFDOM.

WE WELCOMED DELTA SCOUTS TO THE REDD+ TEAM

BCP SUPPORTS 105 COMMUNITY SCOUTS

In November 2020, 50 BCP funded community scouts – 16 of whom are female, successfully graduated from an intense 3 month training course through DNPW (Department of National Parks and Wildlife) from Chunga Training Camp in Kafue National Park.

Looking ahead 2021 of the graduating scouts, 34 will be employed by CRBs (Community Resource Boards) in Eastern Province, and 16 in Lusaka Province. BCP will support the CRBs to cover the costs of Community Scouts. Community scout operations in REDD+ Zones are paramount to safeguarding the wildlife habitat that BCP strives to protect in partnership with communities and Government.

THIS IS ONE IMPORTANT WAY OF CONSERVING WILDLIFE, BECAUSE IF WE LOOK AFTER OUR FORESTS WE CAN REDUCE THE IMPACTS OF CLIMATE CHANGE. I AM VERY HAPPY TO BE WORKING AT THE FOREFRONT OF HABITAT PROTECTION IN ZAMBIA

JOYCE KAMUNGA, BCP SUPPORTED COMMUNITY SCOUT, PETAUKE, EASTERN PROVINCE



WE WELCOMED DELTA SCOUTS TO THE REDD+ TEAM

BCP SUPPORTS 105 COMMUNITY SCOUTS

The addition of new scouts would not be possible without the valuable funding that BCP received from The Darwin Initiative, National Geographic, and The Lion Recovery Fund. BCP will fund 105 community scouts in partnership with 13 Chiefdoms, which means BCP will have almost doubled its efforts to support communities to tackle poaching and encroachment in Community Forests. Community scouts will represent over 50% of the people on BCP's payroll of 205 people. Community members from our Chiefdom partners make up 65% of these jobs. We are proud to be supporting local communities to provide skilled employment and safeguard habitat in this way.



2020-2021 FARMING SEASON CLIMATE-SMART AGRICULTURE

During 2020/2021 farming season BCP, in collaboration with the Ministry of Agriculture and Livestock has worked with farmers in an effort to address food security challenges in targeted areas through the farmer to farmer Extension Model. In an effort to respond to the country's vulnerability to climate change challenges, which directly affects food security in the country, BCP has invested in Climate Smart Agriculture technologies. One major threat to the forest is agriculture expansion, with people clearing more and more land for harvesting. Many farmers in rural Zambia practice traditional 'slash and burn' farming, which contributes to deforestation. Climate-Smart Agriculture raises awareness of the fact that bigger harvests are not solely dependent on bigger fields and teaches farmers of technologies such as Integrated Soil Fertility Management and Agroforestry. These methods of farming: improve soil nutrition, increase the soil organic matter pool over time, and promote improved yields. The end result is smaller fields, but BIGGER harvests, with less land cleared for farming. Following improved farming methods improves food security for families in some of Zambia's most rural communities.

251

LEAD FARMERS ACROSS BOTH PROJECTS

6,275

FOLLOW FARMERS ACROSS BOTH PROJECTS

73

FEMALE LEAD FARMERS ACROSS BOTH PROJECTS



SUSTAINABLE DEVELOPMENT GOALS

BCP currently supports 16 out of the 17 UN Sustainable Development Goals

2020-2021 FARMING SEASON



As part of BCP's community livelihood scheme we train and support Lead Farmers in Climate-Smart Agriculture and conservation farming. Each Lead Farmer in turn trains 25 Follow Farmers. Those Follow farmers are encouraged to share this knowledge with their fellow farmers, and as a result we are helping to teach entire communities through the farmer to farmer extension model.

Each Lead Farmer received 1 Farming Input Demo pack for the 2020/2021 farming season

Each Lead Farmer received a raincoat, gumboots, and a work-suit

We distributed 157 bicycles to those who do not have

HIS IS AMAZING. SINCE I STARTED CONSERVATION FARMING I HAVE BEEN FOOD SECURE WITH MY FAMILY THROUGHOUT THE YEAR. I HAVE ALSO BEEN PRACTICING CROP ROTATION WITH GROUNDNUTS, DISTRIBUTING THE RISK FAILURE OF ONE CROP. I WILL STILL BE ABLE TO HAVE A GOOD HARVEST FROM THE OTHER CROP WHILE MAINTAINING SOIL FERTILITY AT THE SAME TIME. I NO LONGER NEED TO SHIFT MY FIELDS

MR. ERNEST MWALE, LEAD FARMER, JUMBE CHIEFDOM IN ZAMBIA'S LUANGWA VALLEY

WOMEN LEADING LIVELIHOODS AGRO-FORESTRY



Mrs. Enny Simufwiis the Lead Agro-forestry Farmer in Mweshang’ombe community zone, Bunda Bunda Chiefdom. BCP first came to know Enny in 2013 as one of the earliest trained conservation farmers under the Lower Zambezi REDD+ Project. Today, she leads and supports nine other agroforestry farmers. Through BCP’s partnership with the Zambian Ministry of Agriculture, Enny has been able to improve her farming practices and increase her groundnut and maize yields using conservation farming techniques. Enny has also planted 78 citrus trees providing not only a source of income but also a source of added nutrition from the fruits.

Enny had a lot to say about her flourishing orchard and their fascinating benefits.

“I planted mangos and oranges for home consumption. It is part of Agro-forestry.” Pointing to a Sennas ciamea Tree she adds, “Rainfall here is good because of these trees. When we plant these trees, they absorb carbon from the atmosphere and also help with rainfall.”

She adds, “the Faidherbia Albida is used as ‘green manure’. The leaves drop in October and November and make the soil so fertile.” Moving on to the Neem Tree she adds: “These leaves are used as medicine for chickens and people and cure about 200 diseases.”

Our ambitions are to scale up nutrition security in the 13 Chiefdoms we partner with over the next 36 months. It’s an ambitious target, but it’s a necessary one. According to Government statistics, some of these community areas of Eastern Zambia have some of the highest poverty and food insecurity rates in the country. Our goal is to change this through forest protection. In order to live BCP’s mission of making conservation of wildlife habitat valuable to people, we have to pursue strong partnerships targeting the most vulnerable households and scaling Enny and Charity’s stories across thousands of households. We are proud that BCP’s partnerships with Government are building livelihoods and continuing to improve the livelihoods of women, their communities, and their farmlands and forests, and we are proud of Enny and Charity empowering their families through trees.

WATCHING WILDLIFE RETURN TO RUFUNSA

A picture speaks a thousand words... and we think the Camera Trap diaries do just that

2020 was our year to prove the link between protecting forests in LZRP and working with its communities, to the increase of wildlife in the area. The correlation between zero encroachment and the return of wildlife to Rufunsa is clear. This year, in partnership with Lion Landscapes and Oxford University Wild CRU, and funded by the Darwin Initiative, Lion Recovery Fund, and National Geographic's 'Big Cat Initiative', BCP was able to strategically place camera traps in wildlife strongholds, and the results have been remarkable! The camera traps are capturing animals that we did not even know were in the Conservancy.



Although native to the Lower Zambezi National Park, the Moloney's Monkey had not been seen in Rufunsa until we caught them on film. The traps have made it possible to view nocturnal animals such as Caracals and Serval. While placing the traps in more mountainous areas meant that species were captured, such as Kudu and Zebra in places they have not been documented.



WATCHING WILDLIFE RETURN TO RUFUNSA

A monumental sighting to date is the Southern Ground African Hornbill, which has been spotted twice on film, which is a key 'trigger species' for the LZRP, and grants BCP Gold Standard in Biodiversity Monitoring.



We have watched as herds of Sable call the Conservancy their home again. When the project started in 2012 Sable and Roan were rarely seen, and only as single animals. Now big herds of 20-50 are recorded on scout patrols.

The camera traps have provided evidence of predators in the area, such as Leopards and Spotted Hyenas. This in itself is an extremely positive indication, for these large predators need plenty of prey species to survive. Thus, a healthy population of carnivores equates to a healthy population of herbivores, which in turn means that they are supported by a flourishing ecosystem.





This is the 4th consecutive year that a structured biodiversity survey was conducted in LZRP. The survey design is based on a line transect method which is statistically robust. The results from the surveys indicate that the recovery rate of wildlife in LZRP is slow, mainly as a result of the level of depletion prior to 2016. However, the trends in wildlife abundance ratios are encouraging. While the actual wildlife numbers remain low, steady increases were recorded for Klipspringer, Kudu, Roan Antelope, Sable Antelope and Warthog. Bushbuck, Grey Duiker and Sharpe's Grysbok.

ECO-CHARCOAL

POSSIBLY THE BEST GREEN CHARCOAL IN THE WORLD!

Deforestation causes 15% of global carbon emissions, and Zambia's deforestation rate is amongst the highest in the world. One contributing factor to this is that only 28% of Zambians have access to electricity, leaving charcoal as the source of cooking, light, and heat. On top of this, charcoal production is one of the primary income sources for many rural Zambians. BCP created Eco-Charcoal in response to this clear need to create a legal, sustainable alternative product for the market. Probably the best Eco-Charcoal in the world: Eco-Charcoal is Zambia's premium lumpwood charcoal which is sustainably produced to protect Zambian forests. It is 100% pure and natural and burns 20% longer than regular charcoal. It is produced using a modern method that reduces harmful smoke and emissions during use, which reduces the risk of harmful inhalation by its users. Eco-Charcoal currently partners with 31 community producers we call "Charpreneurs" in a bid to provide fair and safe employment for rural Zambians.

In 2020 Eco-Charcoal produced and sold 89.8 tonnes of sustainably produced charcoal, which directly supported 31 households in LZRP.



ECO-CHARCOAL

 ECO-CHARCOAL

POSSIBLY THE BEST GREEN CHARCOAL IN THE WORLD!



“I love my job. Eco-Charcoal helps to support me, as well as my grandchildren. I am a widow and my grandchildren depend on me. With this income, we can buy food and I have managed to buy items for the house such as a kettle. For me, this is very good. I know that it is important, not just for my family, but for Zambia’s future, that we learn sustainable ways to make charcoal. Here in Zambia people need charcoal for cooking, for light, and keeping us warm after dark. Eco-Charcoal is sustainable in that we only cut trees that are bigger than 30cms in diameter, and we cut the trees at such an angle that it allows the runoff from the rainwater to allow regrowth. So after 18 years, the trees will have grown back. We mark the forests so that we know which areas not to cut from as we wait for the trees to regrow”

Indiwin Kalunga, Eco-Charcoal Charpreneur, Kantyantya village

BCP TRUST

The BCP Trust is a separate, not-for-profit legal entity affiliated with BCP. BCP Trust's role is to support community projects linked to BCP's overall forest protection efforts.

BCP Trust works with community stakeholders to address the root causes of deforestation and to design and implement projects to make forest conservation valuable to people.

One such project is Eco-Charcoal™. Started in 2012, the Eco-charcoal™ project was developed to directly address unsustainable charcoal production as one of the major drivers of deforestation in Zambia. Since then, the Eco-charcoal™ project has continued to grow and improve, through ongoing partnerships with BCP, Forestry Department, Musika and Peace Parks Foundation.

As a not-for-profit organization that aspires to achieve community benefits linked to forest protection, BCP Trust seeks additional funding—in the form of grants and donations—for community-based projects attached to BCP's REDD+ Projects.



Charpreneur, Davy Banda

CHARGING FOR CONSERVATION

FUCHS 2020 ELEPHANT CHARGE: TEAM #24 ECO-CHARCOAL

THIRD TIME'S A CHARM FOR TEAM #24 ECO-CHARCOAL IN MONUMENTAL TRIUMPH FOR CONSERVATION EDUCATION IN THIS YEAR'S ELEPHANT CHARGE

In 2018, Team Eco-Charcoal raised a modest \$1,300; determined to beat this, 2019 saw the team raise \$6,000

This year, however, in the midst of Covid-19, and the devastating impact it is having on conservation, the team knew that it was vital to raise as much money as possible for conservation education. Proving that third time's a charm, Team Eco-Charcoal raised \$40,000; the equivalent of K800,000. That is the second highest amount ever raised in dollars, and the highest kwacha amount raised in the Charge's 13-year history. The team went from never winning an award at the Charge, to coming home in 2020 with not one, but two awards, winning The Shortest Net Distance Award and The Highest Sponsorship Raised.



ONCE WE STARTED FUNDRAISING I WAS BLOWN AWAY BY PEOPLE'S CAPACITY TO GIVE, WITH OUR BOARD GRACIOUSLY OFFERING TO MATCH ANY AMOUNT RAISED UP UNTIL \$20,000! I CANNOT THANK OUR SUPPORTERS ENOUGH FOR THEIR GENEROSITY IN HELPING US REACH OUR TARGET

DR. HASSAN SACHEDINA - TEAM ECO-CHARCOAL DRIVER AND BCP CEO

COVID-19

OUR RESPONSE TO THE GLOBAL PANDEMIC

AS COVID HIT ZAMBIA, WE STEPPED UP TO OFFER SUPPORT TO OUR CONSERVATION PARTNERS

In April, we donated 3.5 tons of soap to cater to each household in each Chiefdom in the Luangwa Community Forests Project (LCFP) to help support household sanitation efforts. A total of 35,000 households benefitted. In July, we donated 100 washbasins and 3,000 re-usable masks to Mambwe District Education Board for use in various schools around South Luangwa National Park.

As the world enters an economic recession not seen since the Great Depression of 1929, we are seeing dramatic decreases in tourism and funding available to conserve African biodiversity strongholds.

Nevermore than now is it important to try to support these organizations who are doing great complementary work in the same ecosystems where BCP operates.

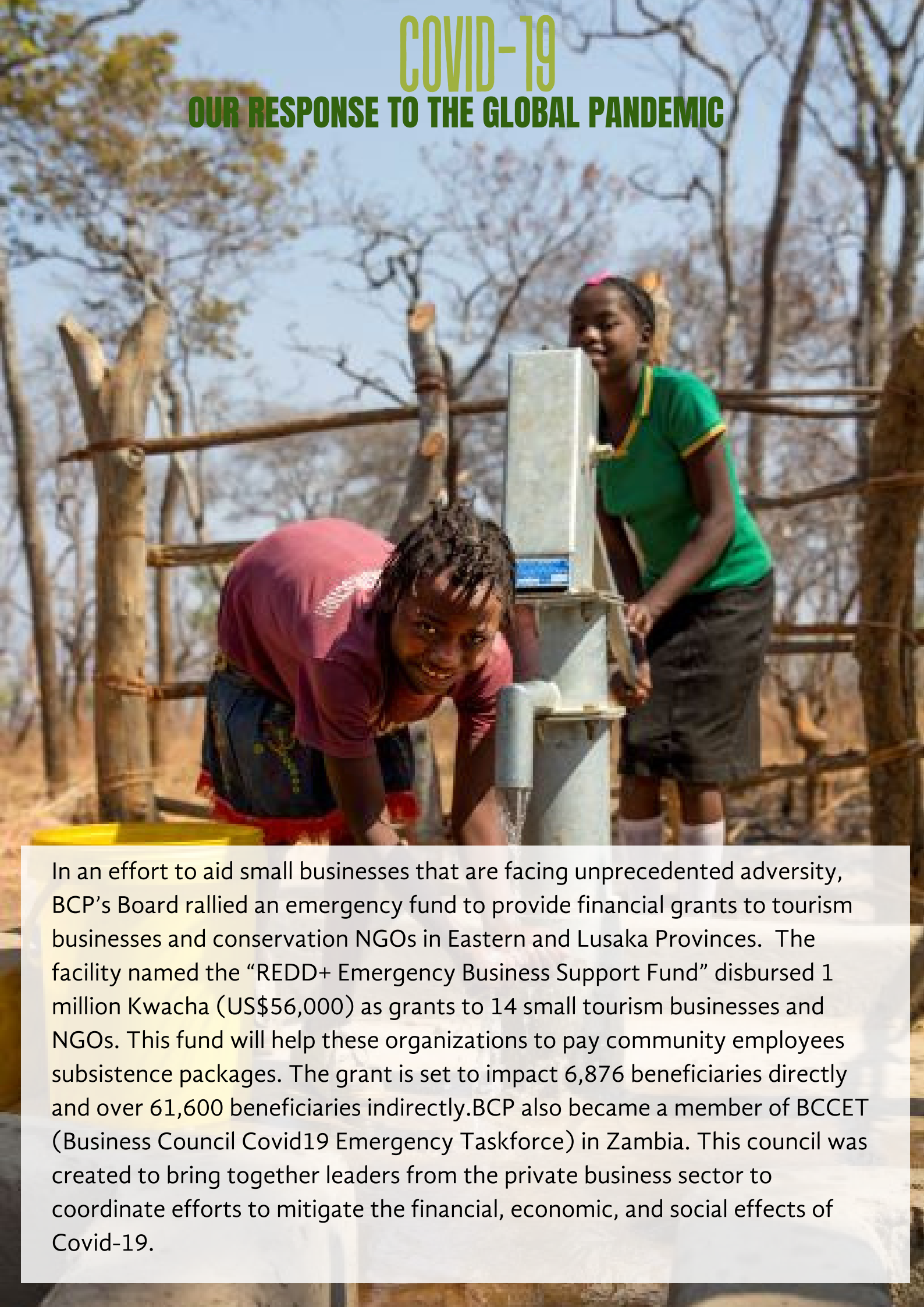
Our hope is that when we emerge from COVID, that the “ecosystem” of businesses and NGOs supporting the same Chiefdoms as us will still be strong



Soap distribution in LCFP

COVID-19

OUR RESPONSE TO THE GLOBAL PANDEMIC

A photograph of two young girls at a water pump in a rural setting. One girl in a pink shirt is crouching and smiling while filling a yellow container. Another girl in a green shirt is standing behind the pump, also smiling. The background shows a wooden fence and bare trees under a clear sky.

In an effort to aid small businesses that are facing unprecedented adversity, BCP's Board rallied an emergency fund to provide financial grants to tourism businesses and conservation NGOs in Eastern and Lusaka Provinces. The facility named the "REDD+ Emergency Business Support Fund" disbursed 1 million Kwacha (US\$56,000) as grants to 14 small tourism businesses and NGOs. This fund will help these organizations to pay community employees subsistence packages. The grant is set to impact 6,876 beneficiaries directly and over 61,600 beneficiaries indirectly. BCP also became a member of BCCET (Business Council Covid19 Emergency Taskforce) in Zambia. This council was created to bring together leaders from the private business sector to coordinate efforts to mitigate the financial, economic, and social effects of Covid-19.

REACHING INTERNATIONAL HEIGHTS WE GUARANTEE EXCELLENCY AND INTEGRITY



B Corporation: Balancing Profit and Purpose

Under our last audit, BCP was the 5th highest scoring Certified B Corporation in the world out of 3,300 B Corps. B Corps are businesses that meet the highest standards of verified social and environmental performance, staff care, public transparency, and legal accountability to balance profit and purpose. We care deeply about our co-workers and it reflects in our B Corp score.



The Oscars of the Carbon Market Awards

in 2020, nine years in the making, BCP was awarded Runner Up for BEST PROJECT DEVELOPER - FORESTRY AND LAND-USE.

We look forward to counting on your vote in 2021!



Both of BCP's REDD+ Projects have been verified against the Verified Carbon Standard



Both of BCP's REDD+ Projects have achieved CCB Triple Gold for exceptional community impact



Our aim for 2021 is to align all BCP standards against the IFC Performing Standards

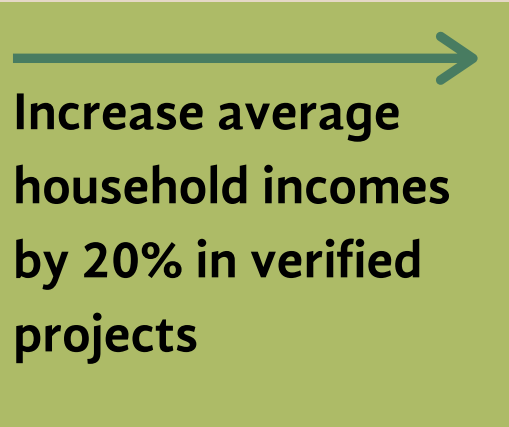


LOOKING AHEAD

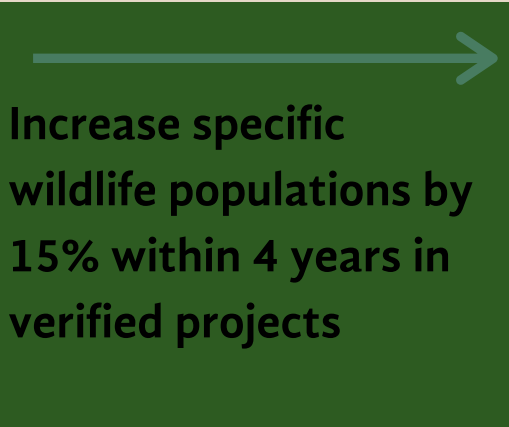
BCP'S MOONSHOT BY 2030 IS TO HELP CONSERVE 10 MILLION HECTARES BENEFITING 1 MILLION PEOPLE IN AFRICA



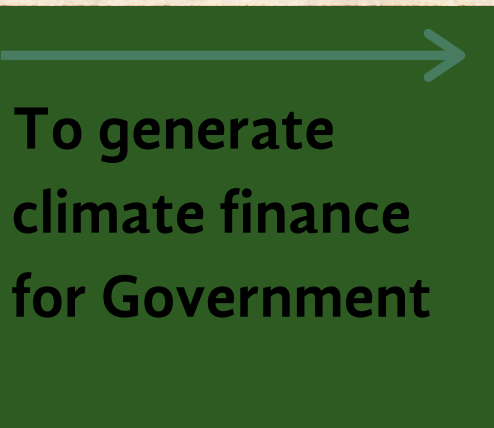
→ This plan is built around facilitating 4 million hectares of new community forests and partnering with up to 45 new communities



→ Increase average household incomes by 20% in verified projects



→ Increase specific wildlife populations by 15% within 4 years in verified projects



→ To generate climate finance for Government



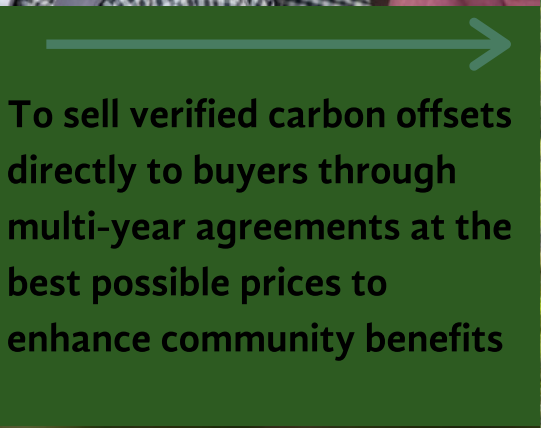
→ To achieve the world's highest-rated REDD+ projects according to multiple standards



→ To support 280,000 people to secure their carbon rights



→ To finance the development of 4 million ha from zero to verification



→ To sell verified carbon offsets directly to buyers through multi-year agreements at the best possible prices to enhance community benefits



→ To build the capacity of CFMG's into stronger community institutions



ACKNOWLEDGEMENTS

Our accomplishments would not have been possible without the support of our valued #PARTNERSINCONSERVATION:

Forestry Department

Department of National Parks and Wildlife

Ministry of Chiefs and Traditional Affairs

Ministry of Agriculture and Labor

Peace Parks Foundation

Musika

Maliasili

Conservation South Luangwa

Lion Landscapes

Lion Recovery Fund

Game Rangers International

The Nature Conservancy

Barotse Royal Establishment

National Geographic

The Darwin Initiative

Mills Foundation



ACKNOWLEDGEMENTS

BCP'S GREEN PARTNERS

Baines River Camp

**Generation Investment
Management**

Ninety – One

ENI SPA

Sky Trails Zambia

Game Rangers International

Pon Holdings

Richemont

WE THANK YOU
FOR YOUR CONTINUED SUPPORT IN
OUR PROGRAMS



BCP GOVERNANCE

Board

Thomas Hancock, Board Chairman
Non-Executive Director

Hassan Sachedina, PhD
BCP CEO Executive Director

Josep Oriol
Non-Executive Director

Bradford Machila
Independent Non-Executive Director

Joke Hoffman, Board Secretary
BCP COO, Executive Director

Nicholas Mudaly
BCP CFO, Executive Director Designate

Senior Management

CEO
Hassan Sachedina PHD

COO
Joke Hoffman

CFO
Nicholas Mudaly

HR Manager
Nyembezi Nkunika Lopa

Carbon Manager
David Gwenzi PHD

Program Manager
Chaona Phiri

Agriculture Development Manager
Shadeck Ngoma

Program Manager
Chaona Phiri

LCFP Project Manager
Tim Parker



BCPTM



@BioCarbonPartners



@biocarbon_partners



@biocarbon_partners



<https://biocarbonpartners.com/>

BCP Office:

**Leopards Hill Business Park,
Lusaka, Zambia**

Tel: +260 211 290 051

**Mail: Unit 3 Leopards Hill Business
Park,**

**Leopards Hill Road, PO Box 50830
Zambia Company**

**Registration Number: 99394
info@biocarbonpartners.com**